

MOTORHOMES 2023

---

#wohnfühlen





Experience unforgettable moments in a place where you have everything to be happy:

**We call it  
WOHNFÜHLEN.**

How do freedom, adventure and nature balance with relaxation, cosiness and security? Your Bürstner will answer that for you! It is your space for all those happy moments. It is spontaneous and flexible, yet familiar and homely. In a nutshell: it is your favourite place - wherever you find yourself.



BÜRSTNER

# #lifedreams

A motorhome vacation is a way of life and often a big dream come true. We at Bürstner have made it our task to make traveling in your motorhome as pleasant as possible. Furniture should not only look good, it should also be suitable for everyday use. Surfaces should not only look good today,

but also after many years of intensive use. Floor plans should offer you as much space as possible and the sleeping facilities should be cosy and comfortable. Our experts take care of that. They work hand in hand with passion so you can feel completely at home even on vacation.

Sylvain  
Heideier  
Wohnfühl-planner

Tatjana  
Afra Weßelbaum  
Wohnfühl-designer

  
Sylvain Heideier

  
Tatjana Afra Weßelbaum

# Find your dream motorhome

## Compact<sup>1</sup>

### ELISEO

Compact-Plus-Class



Length: 5,41 – 6,36 m  
Width: 2,08 m

5 layouts

## Semi-integrated

### LIMITED T

Comfort-Class



Length: 6,95 – 7,42 m  
Width: 2,32 m

4 layouts

## Lyseo range

### LYSEO TD

Comfort-Class



Length: 5,99 – 7,49 m  
Width: 2,30 m

8 layouts

Harmony  
LINE

### LYSEO GALLERY TD

Comfort-Class



Length: 6,90 – 6,99 m  
Width: 2,30 m

2 layouts

Harmony  
LINE

### LYSEO I

Comfort-Class



Length: 6,98 – 7,36 m  
Width: 2,32 m

5 layouts

Harmony  
LINE



<sup>1</sup> Please find the Campervan models in a separate catalogue.



Please find the Elegance range in a separate catalogue.

# Contents

Model overview	6
Lyseo TD	10
Lyseo Gallery TD	18
Limited T	26
Lyseo I	34
#wohnfuehlen	42
Layout overview	46

Direct line to the Configurator  
Use the Bürstner configurator to assemble your dream vehicle step by step.  
[www.buerstner.com/uk/configurator](http://www.buerstner.com/uk/configurator)

More details about all our motorhomes can be found at [www.buerstner.com/uk](http://www.buerstner.com/uk)

Enjoy your freedom in every season. Be it hot summers or frosty winters, the Lyseo TD, the Lyseo Gallery TD and the Lyseo I never take a break:

The Thermo-double floor makes it possible. And what works against the cold also helps in the heat: you always have a pleasant feeling when you walk through your vehicle, especially barefoot. And that's not all: The Thermo-double floor construction also provides a consistently level floor from the driver's cab to the bedroom door. This is how you feel at home.

*Always  
in season*





All information about  
Lyseo TD below  
[www.buerstner.com](http://www.buerstner.com)

*"Experience the beauties of  
this world very close"*



## More than a success story ... a reference.

Who doesn't know him? The Lyseo TD is the undisputed star. Since its market launch in 2016, the semi-integrated has convinced many customers across Europe of its charismatic and practical advantages.

Its most striking feature is, of course, the Thermo-double floor that enables year-round use. In addition, the Lyseo TD offers a variety of options that contribute to its great success. Traditional but also atypical floor plans and with Harmony Line equipment, so that the right Lyseo TD is guaranteed for everyone.



"The Lyseo TD is one of the icons of Bürstner history, just like the Elegance. We have seen how the model has increasingly established itself as a reference in the semi-integrated segment year after year, and that makes us very proud. Its success rewards the work of our engineers and once again underlines the innovative strength of our brand."

**Sylvain Heideier, Wohnföhl-planner**



*Find more details about your vehicle at [www.buerstner.com/uk](http://www.buerstner.com/uk)*



## Lyseo TD *Harmony* LINE

### Exterior advantages

- + Harmony Line product graphic
- + 16 inch Alloy wheels
- + 2 x Garage door (standard on TD 684 G and TD 594)
- + XL Premium entry door
- + Sun-Roof
- + LED Day time running lights
- + Glossy black radiator grille and black framed headlights
- + Roll out awning in anthracite inc. LED-lights
- + Exterior power socket 230 V / 12 V / TV
- + 100 Watt Solar panel
- + SAT/ Air conditioning / Solar Panel cable preparation
- + Door sills (not for TD 594)

### Interior advantages

- + Harmony Line entry unit with shelves, TV area and magnetic holder for glasses
- + Upholstery in the exclusive Harmony Line design
- + Indirect lighting throughout the vehicle
- + Fully-equipped kitchen
- + Vario-roller blinds (depending on layout)
- + Fiat Comfort Package II with 10" screen
- + Triplex combination oven
- + Flat screen holder
- + Combi 6 E Heating
- + Cab and living area carpet
- + Lounge package (in TD 744 only)



# Harmony

— LINE —

The Lyseo TD doesn't compromise on style. Harmony of shapes and colours, solidity of materials, quality of finishes: nothing is left to chance so that upon boarding, love at first sight is immediate. Among the eight floorplans, some stand out for their atypical layout, such as the TD 744 version with rear seating, the TD 644 without front seating or the latest additions to the range TD 594 and TD 684 G. Bold, but always perfectly well thought out: thousands of satisfied users can attest to it!

*More #wohnfühlen at  
[www.buerstner.com/uk](http://www.buerstner.com/uk)*





Key facts

- + Thermo-Double Floor
- + Special exterior graphics
- + Well thought-out interior for even more #wohnfühlen



Paint finish

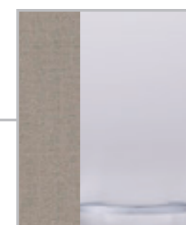


White (standard)



Lanzarote Grey (optional)

Wood finishes

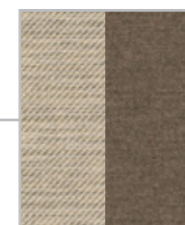


Bahia



Santina

Fabrics



Catania Pure



Verona Pure



Genua Pure



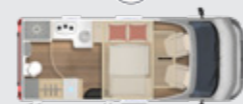
Bari Pure



Osaka Pure (optional)

Layouts and standard features

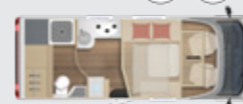
TD 594



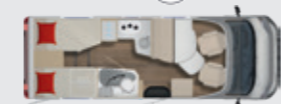
TD 644 G\*\*



TD 684 G



TD 690 G\*



TD 727 G\*



TD 736\*



TD 732\*



TD 744\*\*\*



\* Can be ordered with or without a fold-down bed above the middle seating group (standard in TD 594, TD 684 G)

\*\* Fold-down bed above the rear seating group as standard

\*\*\* Can be ordered with or without a fold-down bed above the middle seating group. Fold-down bed above the rear seating group as standard



Wohnfühlen no matter which Lyseo TD layout you choose!



All information about the Lyseo Gallery TD at [www.buerstner.com](http://www.buerstner.com)

*"Streamlined semi-integrated on the journey, spacious alcove at the destination!"*



## Travel small, live big

This is the motto of our new Lyseo Gallery TD series. The absolute highlight is its hinged alcove, which sets itself fully automatically in just 90 seconds. Inside, the living space is enlarged by a unique second level that can be used in a variety of ways.

In addition, the Lyseo Gallery TD enables a completely new interior design with exclusive design and furnishing elements. To be discovered in the first two layouts TD 649 G and TD 689 G.



"It goes without saying that this high-quality semi-integrated vehicle is fully equipped with all Bürstner standards: Thermo-Floor functional base, Vario bathroom (depending on the model), design elements and much more."

**Tatjana Afra Weßelbaum, Wohnföhl-designer**



# Lyseo Gallery TD *Harmony* LINE

## Exterior advantages

- + Newly designed T-hood with integrated folding roof and electric lock (for driving)
- + High-quality exterior graphics
- + 16" alloy wheels
- + TractionPlus
- + Exterior mirrors electrically adjustable and heated
- + Headlights with black frame
- + Aluminum frame window
- + Premium XL cabin door including central locking for driver and cabin door, window, fly screen and charging station for "Home Light"
- + Garage door also on the left in the direction of travel
- + Rear bumper with chrome application
- + "Harmony Line" Graphics
- + Hybrid rear lights
- + Service unit
- + Thermo-double floor

## Interior advantages

- + 2nd living floor with work surface and sleeping place
- + Fixed stairs with integrated storage compartments
- + Stylish bar element with wall lamp and docking station (Home Light)
- + 2 inviting entrance elements (right and left)
- + Exclusive and coordinated lighting concept
- + Ergonomically adapted access to the bathroom, garage, bed and living room
- + Large rear bathroom with separate shower and large Wardrobe (TD 689 G) or space-saving Vario bathroom (TD 649 G)
- + 2 furniture decors to choose from: Sandy Gray or Casa Pino
- + Large garage
- + Round seating group in the rear with conversion option
- + Optional fold-down bed for additional sleeping places (TD 649 G)
- + Pilot seats, upholstery covered like living room
- + Leather steering wheel and leather gear knob
- + Additional battery light "Home Light" (2 pieces)
- + Upholstery with "Harmony Line" embroidery
- + Entrance element with design decor
- + Sun-roof that can be raised, with fly protection and blackout blind
- + Side wall paneling in kitchen
- + Light package
- + Rotatable kitchen plate extension (depending on layout)

Find more details about your vehicle at [www.buerstner.com/uk](http://www.buerstner.com/uk)



In the new Lyseo Gallery TD you are more modern than ever. Who else can claim to be traveling in a mobile loft? The Bürstner innovative strength is not only a real eye-catcher from the outside, it is also evident throughout the interior and in many details. First of all, you are welcomed into a stylish living room with an open kitchen, bar element and inviting seating area. The special interplay of trendy colours in combination with the elegant upholstery and the plain-coloured decor is striking. It continues with a permanently installed Staircase, whose storage space potential has been optimally used and which leads to the second floor. Just awesome!

*For everyone who wants to aim high!*



Key facts

- + Hinged alcove
- + 2nd living level
- + 2 layouts to choose from (TD 649G, TD 689G)
- + Thermo-double floor and level floor
- + Winterized camper
- + Large garage
- + Modern interior
- + Fold-down bed in the rear optionally available in the TD 649 G



*Harmony*  
LINE

Paint finish



White



Lanzarote Grey (option)

Fabrics



Bari Pure



Catania Pure



Verona Pure

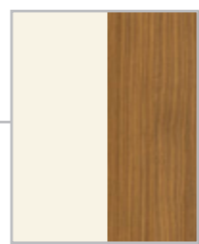


Osaka Pure (option)

Wood finish



Sandy Grey



Casa Pino

Layouts and standard features



XXL drop-down bed in the rear available as an option in the TD 649 G. You can stay there in length or width (depending on the positioning of the bed)!



All information about  
Limited T at  
[www.buerstner.com](http://www.buerstner.com)

*"Everything included -  
ready to go  
for the holidays!"*



LIMITED T

## For an instant holiday mood

Even the exclusive, dynamic exterior graphics tell you: With this semi-integrated motorhome you can start at any time - and ideally right away. And a look inside shows that you will be traveling with exclusive equipment.

Do you need more sleeping places? No problem. The Bürstner invention of the fold-down bed in the semi-integrated mobile home is available as an option for all layouts.



*"With the Limited T, traveling and exploring becomes a matter of course. It is so comfortable and well thought out down to the last detail. Pure relaxation, even before the first kilometres. You just drive off, collect new impressions, enjoy the inspiration."*

**Tatjana Afra Weßelbaum, Wohnföhl-designer**



Find more details about  
your vehicle at  
[www.buerstner.com/uk](http://www.buerstner.com/uk)



## Limited T

### Exterior advantages

- + 16" alloy wheels
- + GRP roof for better protection against hail and the elements
- + Front spoiler painted in body color
- + Sun awning including LED lighting
- + Special paint finish driver's cab in black
- + Premium XL cabin door (2-point locking, central locking, windows, fly screens, waste collectors and charging station for battery light "Home Light")
- + Roof hoods with blackout blind and fly screen in the living and sleeping areas
- + Sun-Roof (can be set up, with blackout and fly protection)

### Interior advantages

- + Middle seating group convertible to a bed
- + Inside standing height 212 cm
- + Indirect lighting
- + Large compressor fridge, 142 l
- + Vario roller blinds
- + Multi-zone cold foam mattress for all bed variants
- + Exclusive upholstery selection with high-quality quilting pattern
- + Fold-down bed electrically adjustable via middle seating group (optional)



The living room with a spacious seating area and the kitchen await you with open arms and have small delicacies ready for you. Then simply fall into the pillows of the bed and relax.

Lots of smart and functional details such as the Vario bathroom, the fold-down bed (optional), the sunroof or the side panelling in the kitchen complete the overall picture of the fully equipped vehicle perfectly. Feel at home wherever you travel.

That's #wohnfühlen!

*Relaxation made easy!*





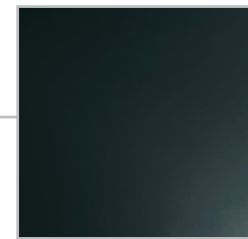
Key facts

- + Continuous floor in the living area and in the kitchen
- + Side paneling in the kitchen
- + Modern "Limited" exterior graphics
- + 2 exclusive upholstery variants with high-quality quilting
- + Awning with LED lighting
- + Sun Roof



*The Limited T: fully equipped inside and out!*

Paint finish

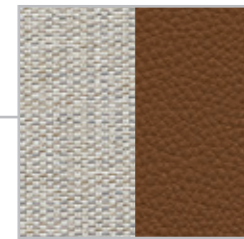


Black (cabin)

Fabrics



Lecce Melange



Bari Melange

Wood finish



Riva Loft

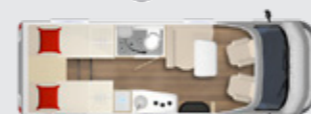


Layouts and standard features

T 660



T 690 G



T 726 G



T 727 G



The purest feel-good holiday: The beds in the rear with the adjoining bathroom are generously designed (depending on the layout, French bed in the T 660 is shown).



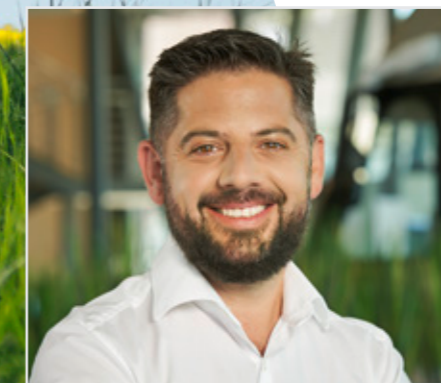
All information about  
Lyseo I below  
[www.buerstner.com](http://www.buerstner.com)

*"The new integrated  
from Bürstner!"*



## The most beautiful sides of life

The new Lyseo I interprets the combination of form, design and function in its own way. The first glance through the large windscreen fascinates and lets you experience the landscape in a new panorama every day. Plus 5 living space solutions, all of which are based on the Thermo-Double Floor and provide the ideal basis for enjoying the best aspects of life all year round. And younger campers also appreciate the advantages of an integrated vehicle. With the Lyseo I, everyone can enter the premier class of mobile homes.



*"The typical Bürstner face is striking on the Lyseo I. With it, a high-quality integrated vehicle has been born in the mid-price segment, which is characterised by a cosy interior concept and high ergonomics."*

**Sylvain Heideier, Wohnföhl-planner**



Find more details about your  
vehicle at  
[www.buerstner.com/uk](http://www.buerstner.com/uk)



# Lyseo I

## Exterior advantages

- + Newly designed front with large windscreen, offset headlight panel, integrated individual LED daytime running lights
- + Smooth side walls
- + Wide entrance door
- + Bürstner hybrid rear lights
- + Aluminum frame windows
- + Gas bottle box at an ergonomic height for easy loading and unloading

## Interior advantages

- + Generous seating and sleeping options in all models
- + Rear lounge in the I 744
- + Fold-down bed above the driver's cab, standard in all models
- + Ergonomically arranged shelves/storage compartments, adapted access to the bed, bathroom and living area, shaped seating furniture
- + Rear garage in the I 690 G and I 727 G with large garage doors
- + 5 upholstered living worlds with elaborate quilted pattern
- + Running floor with storage compartments



In the new Lyseo I, experience what it means to be on the road in a modern mobile home. Because that's exactly what you feel in the interior of the Lyseo I models. Whether in the rear lounge of the I 744 with a stylish sideboard and trendy lighting effects or in the perfectly fitted fold-down bed that disappears into the sky during the day. Treat yourself to the time in modern bathrooms, beautiful kitchenettes and inviting seating areas. Incomparable sense of space paired with taste in colours and materials and shapes to enjoy.

*Treat yourself to a break!*



Key facts

- + Fold-down bed above the driver's cab optionally available in all models
- + Generous and open room design in all models
- + Thermo-double floor
- + Attractive exterior graphics
- + Upholstery with "Harmony Line" embroidery and special quilting pattern



*Single, double and fold-down bed, oven, bathroom, garage... the Lyseo I impresses across the board.*



Paint finish



White

Fabrics



Catania Pure



Verona Pure



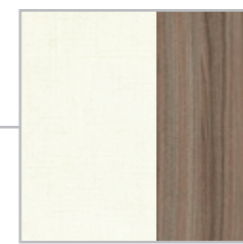
Genua Pure



Bari Pure



Osaka Pure

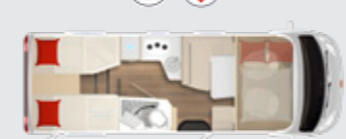


Sandy Grey

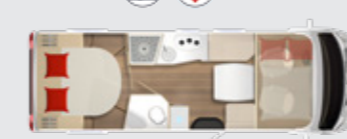
Wood finish

Layouts and standard features

I 690 G



I 736 G



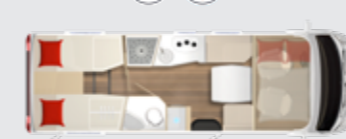
I 726 G



I 744



I 727 G



High-quality features, a homely interior design concept and outstanding ergonomics.

# More than a vehicle

Travelling with a motorhome is not only another way to go on vacation, but a way of life. The dream of being on the road with your motorhome and all you need. The Bürstner brand stands for this dream like no other. We do everything to ensure that the feeling of space, furniture design and functionality are perfectly coordinated. In this way, the joy of being on the road together, living and experiencing can be rediscovered every day. Drive to your favourite places, in your favourite place.

*All details at  
www.buerstner.com/uk*

## Become a star Chef

Fish straight from the sea, fruit straight from the tree and crunchy vegetables from the local market-in your motorhome you can conjure up delicious dishes using the freshest ingredients. State-of-the-art gas cookers, drawers with soft-close function, cleverly positioned refrigerators: Bürstner kitchens fulfill all your wishes. Because good cuisine is the foundation of all happiness.



## Sweet dreams

Bürstner has all you need to help you relax after a busy day and recharge your batteries ready for new adventures. There are beds to cater for every taste – single, double or queen-size beds. Then there are some clever features which make it really comfortable to lie in all positions. Sleep well – and sweet dreams!

## Live harmoniously

Everything in a Bürstner is designed to create a harmonic interior... We pay attention to the appearance, but ergonomics and functionality are just as important. And that is exactly what defines the indescribable Bürstner feeling.



## Feel refreshed

What could be nicer than being able to refresh yourself after a long drive. A day at the beach or after doing sports? The day also starts much better after a warm, relaxing shower. Everything has been thought of in a Bürstner bathroom so that you can enjoy this daily ritual with all your senses.



## Drive safely

Travelling with a feeling of security should and may be your only requirement. You can only expect the best from a Bürstner when it comes to chassis and drive technology. All models are based on chassis that are characterised by reliability and functionality. There are also numerous equipment options, standard or optional, that enhance the #wohnfuehlen.



## Clever arrangements

Anyone travelling for any length of time, perhaps taking the occasional road trip, needs space for the big things and all the little necessities. Bürstner is on a mission to exploit every last millimetre of space and to come up with clever design solutions to maximise storage capacity. For example, with easily accessible cargo holds and a lot of storage spaces and compartments, even in the underfloor.



## Individual design

You are unique. And so is your Bürstner too. A wide range of paint variants, numerous upholstery options, diverse equipment packages and much more! The possibilities for personalising your dream motorhome are endless! Only one thing counts: that you feel at home. Anywhere, anytime.

*My Bürstner fits to me!*





## Experts in #wohnfühlen

You don't buy a motorhome at will. You get information, you visit it, you compare and think. And when you finally decide, you can be sure that you have found exactly the vehicle that best suits your needs. We are aware of that! That's why we work with experts who are committed to making your wishes come true. You can rely on us 100% because we are passionate and have many years' experience working

for brands and products. We work ambitiously towards a single goal: that your Bürstner truly becomes your favourite place! Our headquarters are on the border between Germany and France – and this great opportunity. We get the best out of this European environment. German reliability and thoroughness paired with French joie de vivre and a sense of aesthetics. The best of both worlds for you.

*Find out more on our website  
www.buerstner.com/uk*

## Be connected. Even when you are on the go

There is something magical about starting a journey. The butterflies in your stomach. What experiences will the tour bring? It is good when you have entrusted yourself to a strong brand like Bürstner. Wherever you are, a Bürstner trade partner is always nearby. No matter whether it is a spare part, a service interval or just good advice. Good to know that you are part of the large Bürstner family.



## Perfect living atmosphere

Enjoy the light and airy: This is one of the demands that characterise the interior design of every Bürstner. With the comprehensive climate and lighting concept, Bürstner always ensures an optional

atmosphere. Many useful improvements help you always feel comfortable inside the vehicle regardless of the outside temperature and that the holiday experience is remembered for a long time.

## Our experience in action for you

Our motorhomes carry the entire DNA of Bürstner: They are built in our German plant in Kehl, their furniture comes from our branch in Wissembourg, France. You benefit from more than 60 years of know-how in the production of leisure vehicles. Thanks to the reliability of our procedures, the competence of our employees and the uncompromising quality, you can be sure: with Bürstner you can look forward to your trip with ease! The best proof? The water ingress guarantee of 10 years on all our vehicles from 2019\*.



\* Requirement: one annual control of the from a recognised Bürstner partner is performed.



*More than a vehicle.  
Made by Bürstner*

Campervans <sup>1</sup>

ELISEO

C 540



C 543



C 602



C 642



C 644



<sup>1</sup> Please find the Eliseo range in a separate folder.

Semi-Integrated

LYSEO TD

TD 594



TD 644 G\*\*



TD 684 G



TD 690 G\*



TD 727 G\*



TD 732\*



TD 736\*



TD 744\*\*\*



LYSEO GALLERY TD

TD 649 G



TD 689 G



\*Can be ordered with or without a fold-down bed above the central seating group (standard in TD 594, TD 684 G).

\*\*Can be ordered with or without a fold-down bed above the central seating area. With fold-down bed over the rear seating group as a standard.

\*\*\* Can be ordered with or without a fold-down bed above the middle seating group. Fold-down bed above the rear seating group as standard.

Semi-Integrated

LIMITED T

T 660



T 690 G



T 726 G



T 727 G



All Limited T can be ordered with or without a fold-down bed above the central seating group

Integrated

LYSEO I

I 690 G



I 726 G



I 727 G



I 736 G



I 744



Icons

-  GRP floor
-  GRP roof
-  Standing headroom in the vehicle
-  Thermo-Floor-Double-Floor
-  Continuous running floor
-  Lounge
-  Transverse bed
-  French bed
-  Refrigerator volume in litres
-  Compact length
-  Bicycle garage (standard)
-  Central locking system
-  Fold-down bed
-  Isofix
-  Queen size bed





3449200 - 5 - A1 - 08/22

Concept & design: Kresse & Discher GmbH

Production: Kresse & Discher GmbH

Photos: R2N, Uros Podlogar Photography, Julia Nimke, Globusliebe, Manfred Baumann, Manuel Wollenhaupt

Printed in Germany

The technical data in this catalogue were current at the time of going to press. Although we check the content carefully, we cannot guarantee that the document is free of printing errors. The design and colour of fixtures and fittings may vary from those illustrated, as is customary in the trade and due to the nature of the materials used. The technical data given in this publication correspond in weight and dimensions as well as in the options and design to the level of knowledge and production at the time of printing (08/2022). Bürstner reserve the right at any time to make modifications or improvements to the product. Therefore, we recommend that during the information process and before completing the contract you consult our website, use our configurator and/or contact our Bürstner authorized dealer on possible modifications in comparison to the present publication. Some of the photographs feature optional extras or decorative items which are not supplied as standard with the product.

Your Bürstner Retailer is looking forward to seeing you!



Bürstner GmbH & Co. KG  
Weststraße 33  
77694 Kehl  
Tel. +49 7851 / 85-0  
Service-Hotline 85-950  
Fax +49 7851 / 85-201  
info@buerstner.com  
www.buerstner.com